

# The Back- Office ERP System

## Capabilities Overview

### YOUR Business, YOUR Rules

---

75+ settings which can be set through the UI, so in <10 mins you can personalise RouteMagic to your needs. It grants you optimum control on what your workers can and can't do.

Rules at 3 levels:

1. Mobile Worker
2. Customer
3. Company

We handle the enforcement, so you can focus your time on strategic improvements rather than micromanaging or daily fire fighting due to operational issues.



### Stock Control at every Step

---

Get real-time visibility of stock across all warehouses and vans. At the end of every step, the stock gets updated appropriately, so everyone across the organisation can make the right tactical decisions. 'Van-Van transfers', 'blind stock-takes', 'returns', 'pick lists', 'managing deposit items', 'tracking damaged items' - can all be done with a few clicks and are completely audit-able. **These features can help you reduce your stock shrinkage by over 90%.**

### Customer Management

---

Manage multiple delivery points per customer, enforce end-of-site surveys, charge rentals for deposit items, incorporate specific delivery instructions/windows & automate invoicing. Furthermore, you can setup default products, provide live route date & leverage sales history records to provide outstanding service. Your clients can even have a self-serve portal. **For your Customer, these capabilities go far beyond what is possible with pen & paper systems.**





## Route Management

---

Do route scheduling & planning (ascribing routes to vans & drivers, allocating orders, detailed order info, optimizing routes etc.) through our Route Planner, **featuring a drag-and-drop interface**. **Visual clues** aid planning, to ensure the right stop types are allocated to right vehicle types and vehicles are not overloaded. The Route Monitor gives you complete visibility; locations, delivery status, site summaries & PODs all get updated in real-time.

## Product Management

---

Easily support complex pricing structures such as customer specific pricing, or time-sensitive discounts of varying types. Manage deposit items, equipment, different packaging options, catch-weight items, categorizations & damaged inventory simply. **Hold extensive data for each product, including supplier details, reorder levels and unit of measurements**. **Barcode and scan products throughout your process**.



## Data & Analytics

---

**We track and store all the data in granular form, combined with three different levels of reporting** - giving you access to all the info you need for smooth-running operations. You can **(A)** pull any of the history, **(B)** get custom reports through our reporting module, or **(C)** use a fully integrated BI tool to slice and dice the data the way you want. Not every route, vehicle or customer is profitable. Focus on areas that matter and cut your losses.

## Order Management

---

Our extensive yet simple configurations ensure that the order flow is tailored exactly as per your needs - **nothing slips through the cracks, and you get paid faster**. A very intuitive UI, with shortcuts such as bulk approve, whilst skipable picking & packing with drag-and-drop capabilities makes planning for your staff easier & improves productivity.



Over 100 Customers



Operating In 3 Countries



2000+ Mobile Workers Daily



Go Live In < a Week



low-cost monthly subscription

**UK OFFICE:** +44 (0) 7340 413873  
joseph@mobile-enterprise.co.uk  
Mobile Enterprise Systems Ltd  
27 Rosewell Court, Bath, BA1 2AQ

**UAE OFFICE:** +971 52 920 3250  
vasudha@datainsights.ae  
A3, Business Center, Dubai World  
Central P.O. Box 390667, Dubai

**routemagic**  
Delivering Performance

# The Back-Office Workflow

From Order Creation to Payment



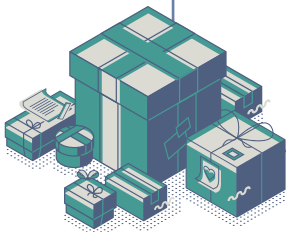
## 1. Taking the Order

Sales Orders can come from an existing ERP, website, mobile sales staff, csv imports or directly entered into the system. The price and tax of items is automated, based on your pricing strategy.



## 2. Picking

Pick operation can be completed with a single click. Options such as bulk-pick & skip-pack can further improve efficiency. **Reduce errors through stock control and pre-population of data.**

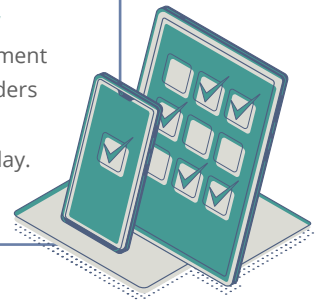


## 3. Packing

Pack items individually or create containers and pack in them. **Packed orders automatically show up on driver's hand-held on the scheduled date.**

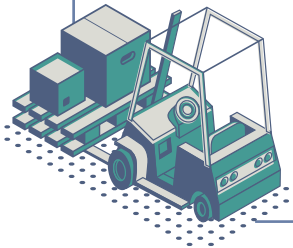
## 4. Planning

**Drag-and-drop functionality** with visual cues and enforcement prevents errors. Can plan orders even before they are picked/packed to prevent delay.



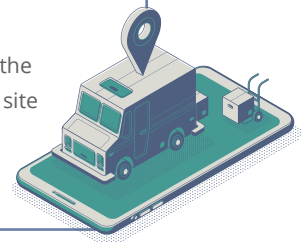
## 5. Loading

Directly create load orders from packed orders with a single click. Drivers can submit load orders as well. **Whatever be your process, we support it.**



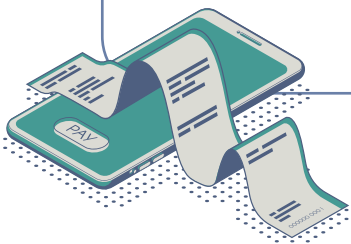
## 6. Monitoring

Route Monitor gives you complete visibility into what is happening on the go. Vehicle location, loading status, site summary and POD's are recalled in real-time.



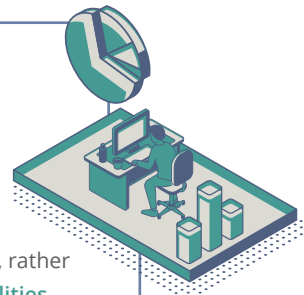
## 7. Invoicing

Invoices are generated based on your rules; Review, edit and send them manually or have them automated. **All data flows seamlessly, improving cash flow & reducing errors.**



## 8. Historical data & Analytics

All data history records for customers, orders, drivers is available at your finger tips. Never worry about missing paper-work, rather **focus on growth using the analytics capabilities.**



## 9. Payments

Collect cash/cheque/credit card payments as per your preference (through mobile worker or back-office processing).

